

THE FAMILY SAFEGUARDING MODEL IN BURY

James Mason – Principal Social Worker

Sarah Holland – Social Work Consultant

Chris Davies – Social Work Consultant



Learning Objectives

- **To understand the application of the aspects of the Family Safeguarding model in Bury.**
- **Understand the principals behind changes to the way we practice.**
- **Become familiar with the Family Programme.**



What are the key aims in the draft Working Together to Safeguard Children 2023?

- To promote and encourage early identification and early intervention.
- To identify the right people with the right knowledge, skills, and relationships to provide families with the right support at the right time keeping children's wellbeing and safety at the centre.
- To introduce national multi agency child protection standards to ensure and promote continuity and consistency in how practitioners respond to and work with child protection concerns.
- To encourage respect amongst professionals regarding each other's knowledge, input, and opinion around children, as well as encouraging curiosity and challenge amongst professionals, where appropriate.
- To include much greater integration, co-operation, dialogue and sharing of information between professionals.
- To keep the child informed around discussions and planning and listen to the child's wishes.
- To increase the role of family networks in supporting children to stay with parents via family led forums and family group conferences, to help them design and arrive at their own plans and to promote this from early help.

What are the key changes proposed in the draft Working Together to Safeguard Children 2023?

- Encourage the family and parents to play a more active role in the discussions, inquiries, and plans.
- Reference to 'lead practitioner' rather than 'social worker' as the case holder across early help, child in need and child protection.
- Identify and extend the groups of children who may have a potential need for early help. For example, children missing from school, children forming inappropriate relationships online, children at risk of exclusion from school.
- Early help assessments to include the needs of all family members and how those needs impact on one another.
- Early help assessments providing the basis for any further assessments under s.17 or s.47. If complex, the social worker could be the lead practitioner in early help cases.
- Removal of the requirement for social workers to hold CIN cases. They could be held by a family support worker, domestic abuse worker or a drug and alcohol worker overseen by a social work manager.
- Social workers still required to hold child protection cases.
- A set of national multi agency child protection standards to provide practitioners from different agencies and backgrounds with a common framework in which to operate.

The Need for Change

- **Number of children in care doubled in the last 20 years.**
- **Number of babies removed from parents at birth has doubled in 10 years.**
- **Of the 25 000 children subject to care proceedings, 50% are not removed from their families.**
- **Difference that the Family Safeguarding Model has made:**
 - Up to 45% reduction in children/young people needing a Child Protection Plan.
 - Up to 30% fewer children/young people needing to come into care.
 - Up to 66% reduction in repeat Police call outs to domestic abuse incidents.



Change our attitudes to families so they can change theirs of us – focus on parents' strengths and build their confidence.

- Meet the parents needs so they can meet the needs of their children.
- Do with, not to.
- Child Protection is the threshold for Court – relooking at what we do – are we applying threshold correctly?

Family Safeguarding Vision and Values

Practice that:

- promotes the upbringing of children in their families
- identifies, supports, and meets the needs of children & parents in order to make a difference to the child
- has multi-disciplinary teams providing services to CIN & those in need of protection and their families
- uses language that is empathic, motivates, and builds relationships
- has an emphasis on direct work with families
- is strengths-based, needs-led, and seeks to work in partnership with families to facilitate sustained change
- has concise recording, which is purposeful and analytical
- works to create change for children, not monitoring their circumstances / enforcing compliance

OUR VISION – To keep more children/young people safe at home with their families

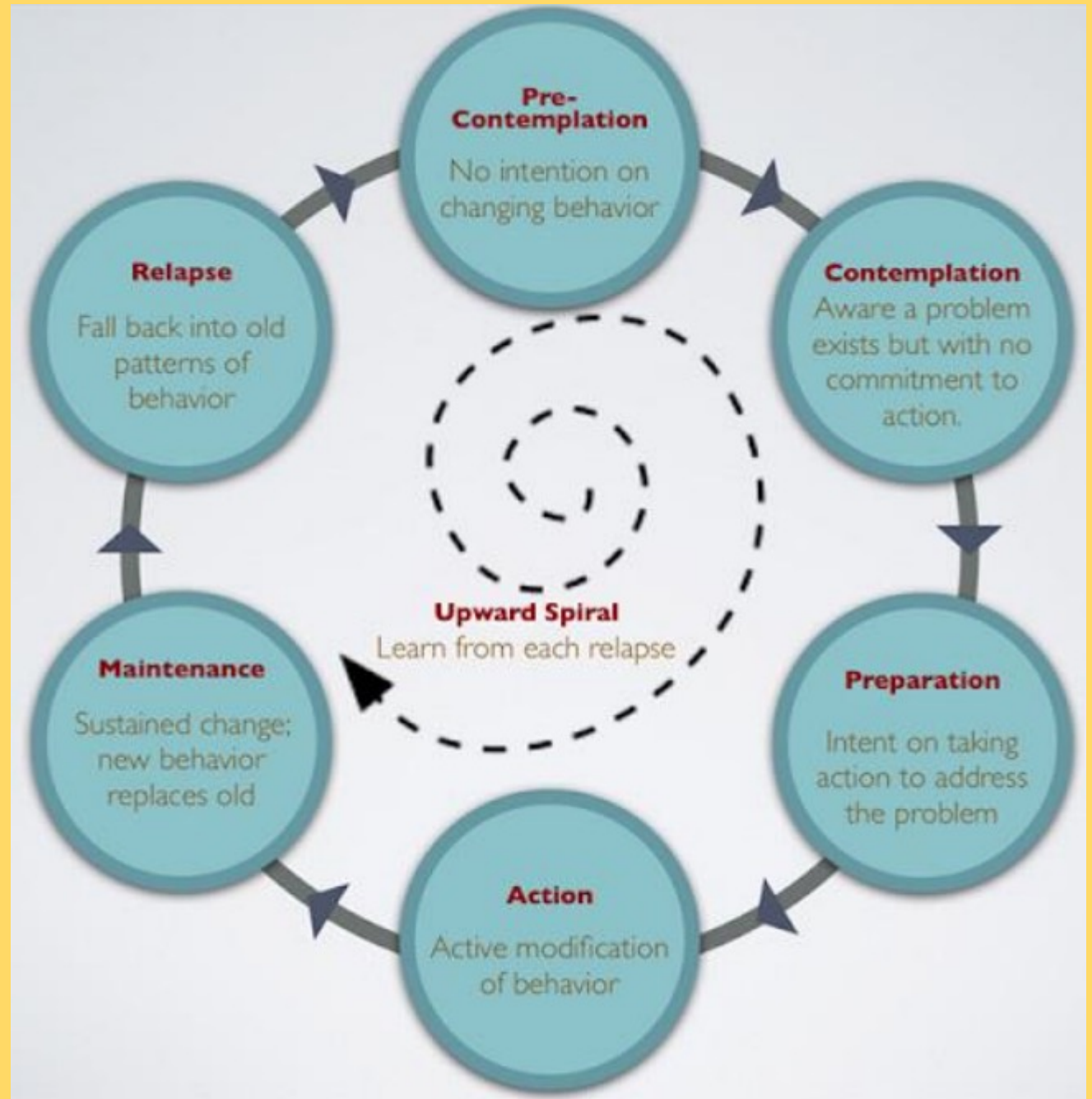
A Family Safeguarding Team



Motivational Interviewing

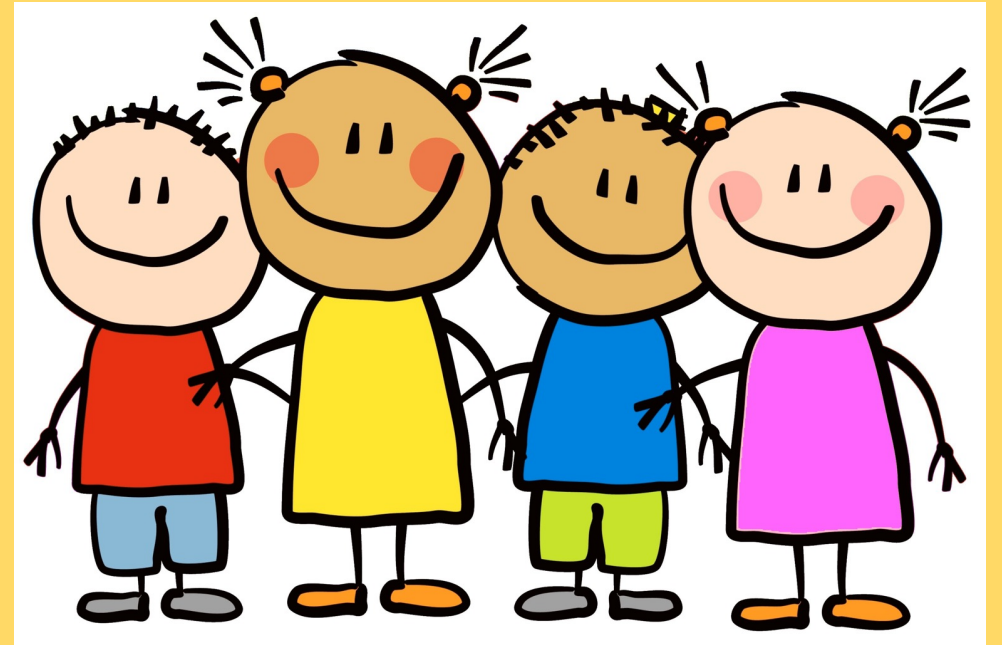
Motivational Interviewing is at the heart of our practice and all workers in the FS Team use it as a tool to improve engagement and encourage change.

MI is described as a “collaborative conversation style for strengthening a person’s own motivation and commitment to change”



Threshold

- Children Act 1989
- Impairment vs. Harm
- Applying Threshold



Working With – Parental Consent

- Wherever possible, you should seek consent and be open and honest with the individual from the outset as to why, what, how and with whom, their information will be shared.
- You should seek consent where an individual may not expect their information to be passed on.
- When you gain consent to share information, it must be explicit, and freely given.
- There may be some circumstances where it is not appropriate to seek consent, because the individual cannot give consent, or it is not reasonable to obtain consent, or because to gain consent would compromise a child's or young person's immediate safety.

Family Safeguarding Recording

Workbook – Introduced as the recording system for the Family Safeguarding Model

The Workbook will include all family members – family recording

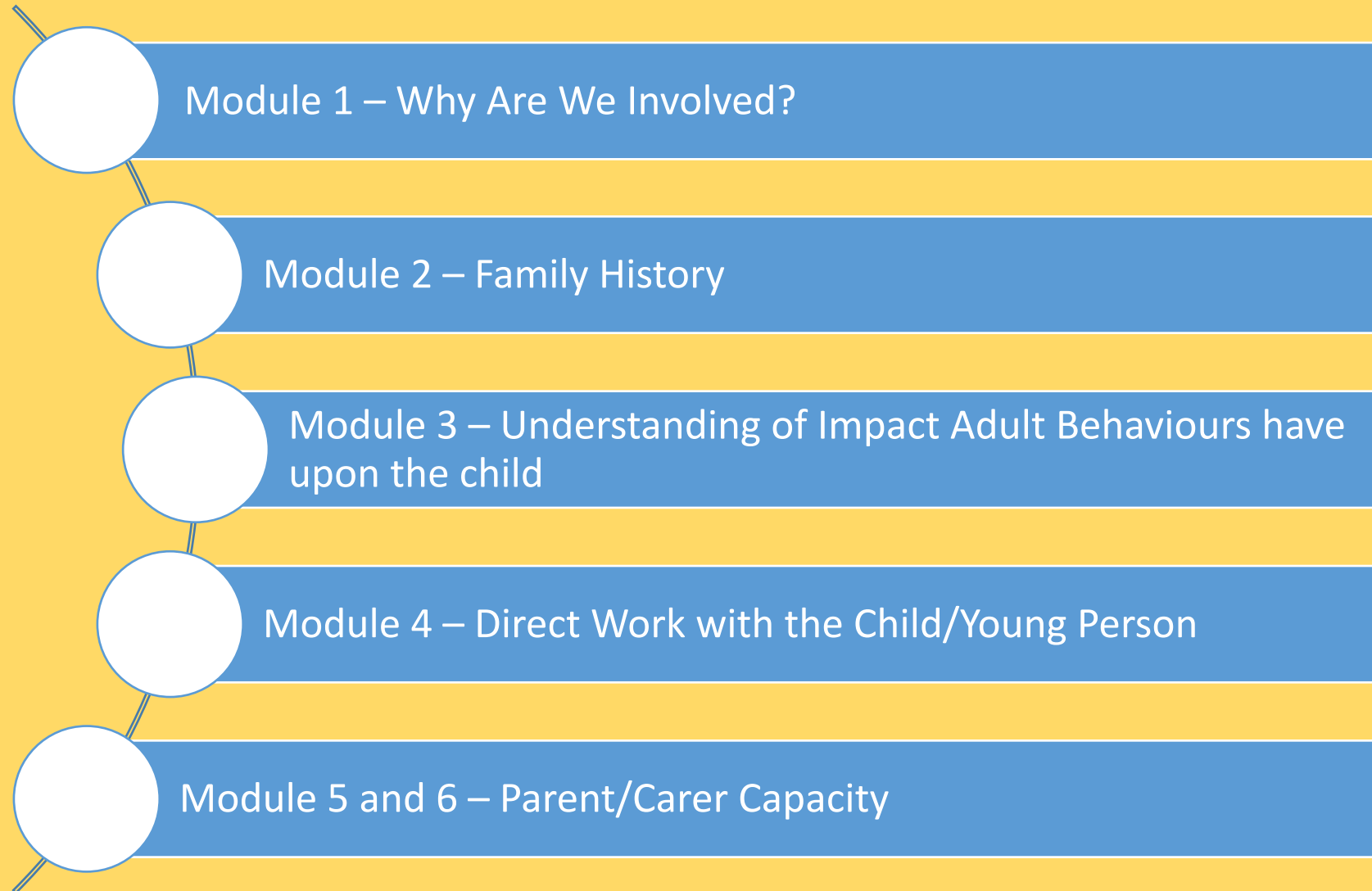
Modules are used to guide practitioners' direct work with families

This direct work is undertaken in partnership with families

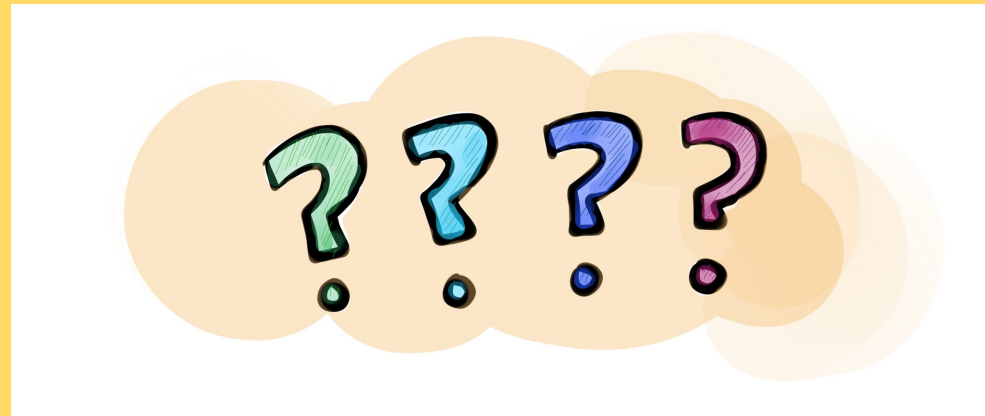
The modules offer an opportunity to identify strengths, support needs, analyse information and track changes and progress

Adult workers contribute their expertise and analysis

The Family Programme – A Framework



Any Questions?



Please email childrenswfd@bury.gov.uk if you have any questions or need any support.